

LEARNERS WITH AUTISM:

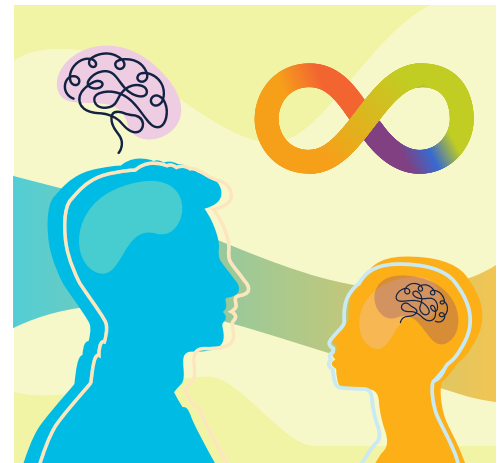
# Inclusive Practices for Educators



These practices are valuable for any class. They are especially important for children with autism.

If you are an educator, review the list below and determine which already apply to you and your teaching and which you'd like to know more about. For those that you'd like to know more about, select one or two and identify specific strategies that you can use with your students.

- I openly encourage and support **diverse thinking**.
- I place an emphasis on **strengths and well being**.
- I try to find out **what motivates each student**.
- I allow for **deep investigations** on topics of interest.
- I encourage **social interaction** and support.
- I provide **space for alone time**.
- I am aware that certain **sensory experiences** can be overwhelming for learners with autism.
- I support students learning **autonomy** and being **self-advocates**.
- I encourage students to **express their learning** in different ways.



Find this PDF online at: [chconline.org/inclusive-practices-educators](https://chconline.org/inclusive-practices-educators)



AUTISM GUIDE

CHCONLINE.ORG/AUTISM-GUIDE

